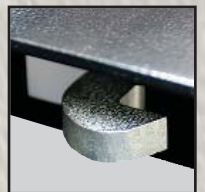


SENTRI XLOCK™ 622

(1800mm L x 630mm H x 600mm W overall size)
(1758mm L x 555mm H x 571mm W internal size)

- Substantial construction from 2 and 3mm sheet steel
- XLOCK™ The whole system operates with 1 key in 1 lock with 1 turn
- Guaranteed key difference of 1:6000. 2 keys per box. Every box has its own individual number for optional replacement key service
- Anti-jemmy bars all round
- Forklift/pallet truck skids with facility for bolting wheels
- Twin hydraulic arms and tool mat for every box
- Drop down recessed handles with rubber pads
- Covered power cable access point for charging tools in the box
- Black powder coated finish
- Full width split heavy duty piano hinge welded to box and lid
- 3 year manufacturers warranty against faulty workmanship
- 116kg



sentrybox

Don't wait until it's too late

The Professionals Choice