



# HS1 120K/HS1 120E Series

## Galaxy

The Phoenix Galaxy HS1120 series is designed and tested to the latest and prestigious European test standards for both Fire and Security Protection.

- **Security Protection** - Tested to the prestigious European Grade 1 Security standard (EN1143-1 ECB.S Certified) giving cash cover of £10,000 or Valuables cover of £100,000\*.
- **Approvals** - Approved by the Association of Insurance Surveyors (AiS).
- **Fire Protection** - Tested to the European LFS 30P Fire protection standard (EN15659 ECB.S Certified) giving 30 minutes fire protection for paper documents.
- **Locking** - Fitted with a high security double bitted VdS class 1 keylock (HS1 120K series) or high security VdS class 1 (SECU SELO-A) electronic lock with time delay function (HS1 120E series).
- **Fixing** - Ready prepared for floor fixing, with fixing bolts for concrete supplied.
- **Construction** - Double wall construction with high grade concrete infill. Door thickness 105mm, wall thickness 77mm. Anti drill plates.
- **Colour** - Finished in a high quality scratch resistant paint RAL9003 White.



HS1121K



HS1123E



HS1122K/E

**OPTIONAL EXTRAS AVAILABLE**  
 Height adjustable shelves  
 Secu Changeable Key Lock  
 Secu B dual control/Time delay electronic lock  
 Cut key only available at time of order unless Secu changeable key lock option is specified



HS1120E



HS1120K



OPTIONAL



HS1120E

\*Ratings are approximate only and may vary due to area conditions and location. Please check with your underwriter.

### Back

The body is constructed of a unique design of the barrier material comprising high resistance composite materials, with metallic fibres and layers of reinforcing armour to protect against drilling, cutting and oxyacetylene.

### Door

The door is constructed of barrier material comprising high resistance composite materials, with metallic fibres and layers of reinforcing armour to protect against drilling, cutting and oxyacetylene attack. In addition to this, high quality drill resistant steel.

### Boltwork

All sizes have 3 way moving espagnolette boltwork with 30mm bolts securing into the top and bottom door frame.

### Guarantee

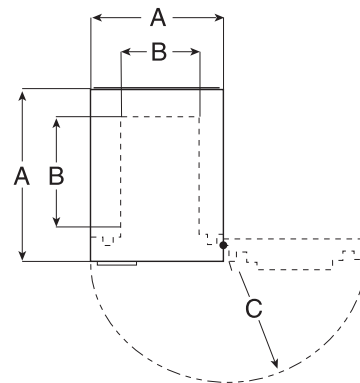
Every Phoenix Galaxy safe has a 2 years on site guarantee against manufacturing defect.

### File Capacity Chart

Type of document file	Total number of files per unit	Configuration	Total number of files per unit	Configuration	Total number of files per unit	Configuration
<b>Series: HS1120</b>	<b>Model: HS1121</b>		<b>Model: HS1122</b>		<b>Model: HS1123</b>	
A4 Lever Arch Folder (H320 x W75 x D290mm)	6	1 row of 4 files 2 files on side on top shelf	10	2 rows of 5 files	17	2 rows of 7 files 3 files on side on top shelf
Foolscap Lever Arch Folder (H350 x W80 x D285 mm)	5	1 row of 4 files 1 file on side on top shelf	8	2 rows of 4 files	15	2 rows of 6 files 3 files on side at top of unit
Foolscap Box File (H370 x W75 x D245mm)	4	1 row of 4 files	10	2 rows of 5 files	17	2 rows of 7 files 3 files on side on top shelf



**DEALER'S STAMP**



- **Dimensions stated as:**
- A** External height x width x depth
- B** Internal height x width x depth
- C** Door swing/Handle depth
- D** Weight
- E** Capacity
- F** No of shelves
- G** Packaged Dimensions & Weight

- **Galaxy HS1121K/E**

- A** 340 x 500 x 345mm
- B** 262 x 424 x 216mm
- C** 415mm/50mm
- D** 93kg
- E** 24 Litres
- F** 1
- G** 350 x 510 x 400mm / 95kg

- **Galaxy HS1122K/E**

- A** 440 x 500 x 432mm
- B** 362 x 424 x 302mm
- C** 475mm/50mm
- D** 127kg
- E** 46 Litres
- F** 1
- G** 450 x 510 x 487mm / 129kg

- **Galaxy HS1123K/E**

- A** 900 x 440 x 430mm
- B** 822 x 364 x 300mm
- C** 475mm/50mm
- D** 204kg
- E** 90 Litres
- F** 1
- G** 910 x 450 x 485mm / 206kg

All weights and sizes are approximate.

All Phoenix Fire Safes come with a Free Lifetime 'after the fire' replacement warranty and a full two year materials and labour warranty.

Phoenix policy is one of constant improvement. We therefore reserve the right to alter any part of the specification achieved in this publication without incurring any obligation.



HS1120 / 11 14 GB

Certificate Number 1059  
ISO 9001