

## 2-DRAWER LATERAL FIRE FILE - 36" WIDTH

2L3610P/2L3610B/2L3610L

Schwab reference #: 2HC36-5000

P - Putty B - Black L - Light Gray



### PROTECTION FEATURES:

- UL Classified Fire Endurance (1 hour at 1700°F)
  - Protects documents, records and valuables against catastrophic loss
- UL Classified Explosion Hazard Resistance
  - Design integrity protects contents against explosions in case of sudden exposure to intense heat
- Impact: UL Classified 30 foot Drop Test
  - Equivalent to falling two stories; contents remain intact and locked

### SECURITY FEATURES:

- Plunger key lock secures all drawers
- Drawer-specific "lock/unlock" provision
  - Provides additional security by isolating access to specific drawers

### INTERIOR FEATURES:

- Lateral footprint design (available in three widths)
  - Provides more space for higher volume filing needs
- Lined interior conceals cabinet insulation and protects contents from unwanted dust
- Rugged suspension system design
  - Ensures smooth and easy drawer movement – even when fully loaded
- Drawer layout flexibility accommodates legal and letter size hanging file folders

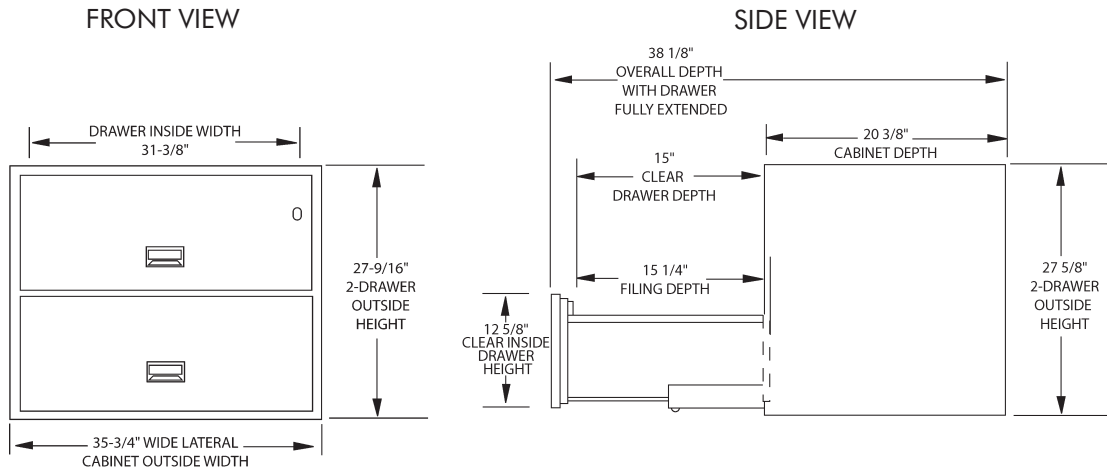
### EXTERIOR FEATURES:

- Seamless design provides a sleek, attractive high-end appearance
- Easy-to-use recessed handles with label holders

| Dimensions (H x W x D)   | Internal Capacity         | Ship. Weight       |
|--|---------------------------|--------------------|
| <b>Exterior</b><br>27.6" x 35.8" x 20.5"<br>70.1 cm x 90.9 cm x 52.1 cm      | 5.6 cu. ft.<br>159 liters | 410 lbs.<br>186 kg |
| <b>Drawer Interior</b><br>10.3" x 31.4" x 15"<br>26.2 cm x 78.7 cm x 38.1 cm |                           |                    |

USA MADE UNSURPASSED PROTECTIVE STORAGE SINCE 1930

# DIMENSIONAL ILLUSTRATIONS



# DRAWER CONFIGURATION OPTIONS

