



Phoenix SS1180/SS1180E Series

Fortress

The Phoenix Fortress SS1180 series safe is designed and tested to the latest and prestigious European S2 Standard and protects against burglary attack.

- Available in three sizes, its large capacity will provide ample accommodation for files, contracts, deeds, documents and valuables.
- Cash rating of up to £4,000.00* overnight for insurance purposes or £40,000.00 valuables.
- Fitted with a high security double bitted VDS Class 1 keylock or electronic lock.
- Ready prepared for fixing to wood, concrete or asphalt floors (bolts supplied are suitable for fixing to a concrete floor only).
- Double wall construction with high grade insulation provide a safe with great strength.



Phoenix SS1181

Phoenix SS1183

Phoenix SS1182



SS1181E SS1181
 SS1182E SS1182
 SS1183E SS1183



*Ratings are approximate only and may vary due to area conditions and location. Please check with your underwriter.



Phoenix SS1180/SS1180E Series

Fortress

Standards

The Phoenix Fortress SS1180 series safe is designed and tested to the latest and prestigious European S2 Standard and protects the contents against burglary attack.

Construction

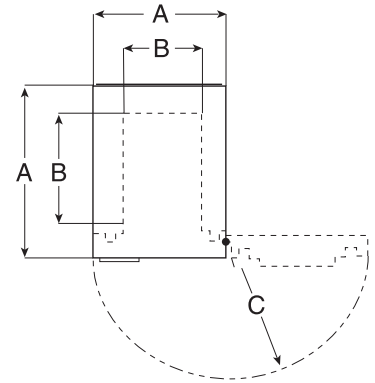
The body is constructed of double wall galvanised steel plate 3mm thick outer and 2mm inner walls. The locking mechanism engages two solid steel bolts (25mm in diameter) into the body of the safe. This construction method produces a safe of massive strength to prevent even the most determined of thieves gaining access. To add further security, the safe is ready prepared for base fixing to any type of wood, concrete or asphalt floor.

The modern, compact and high quality design provides a safe ideal for business or domestic use to store valuables, cash or documents.

Guarantee

Every Phoenix Fortress safe has:

1. 2 years on site guarantee against manufacturing defect.



● Dimensions stated as:

- A External height x width x depth
- B Internal height x width x depth
- C Door swing
- D Weight
- E Capacity
- F No of shelves

● Fortress SS1181/SS1181E

- A 220mm x 350mm x 300mm
- B 140mm x 270mm x 200mm
- C 283mm
- D 20 kgs
- E 8 ltr
- F 1

● Fortress SS1182/SS1182E

- A 350mm x 450mm x 350mm
- B 270mm x 370mm x 250mm
- C 382mm
- D 40 kgs
- E 28 ltr
- F 1

● Fortress SS1183/SS1183E

- A 550mm x 450mm x 350mm
- B 470mm x 370mm x 250mm
- C 382mm
- D 56 kgs
- E 43 ltr
- F 2

DEALER'S STAMP



All Safes.ie

Unit 4, Site 18,
Duleek Business Pk, Co. Meath
+353 (0) 41 98 21789
info@allsafes.ie
www.allsafes.ie

All weights and sizes are approximate.

Phoenix policy is one of constant improvement. We therefore reserve the right to alter any part of the specification achieved in this publication without incurring any obligation.



SS1180 / 07 10 GB

Certificate No. 1059